

the professional
labeling software

NiceLabel 

www.nicelabel.com, info@nicelabel.com

NiceLabel Version 5.1 Enterprise Series

Release Notes

Rev-0711

© 2007 Euro Plus & Niceware® International, LLC

All rights reserved.

www.nicelabel.com

support@nicelabel.com

sales@nicelabel.com



Head Office

Euro Plus d.o.o.
Ulica Lojzeta Hrovata 4c
SI-4000 Kranj, Slovenia
Tel.: +386 4 280 50 00
Fax: +386 4 233 11 48
www.europlus.si
info@europlus.si



Nice Software. Nice Partner. Nice Value.

North American Office

Niceware International, LLC
10437 Innovation Drive, Ste. 147
Milwaukee, WI 53226
Tel.: +1 414 476 6423
Fax: +1 414 476 7955
www.nicewareintl.com
info@nicewareintl.com

Table of Contents

What is New in General	3
Document Storage Server	3
Web Printing is Available.....	4
Reprinting Labels in the Enterprise Print Manager	5
Optimization in the Enterprise Print Manager	6
Improve User Experience with EPM	6
Printer Grouping.....	6
New User Permissions.....	6
NiceLabel Enterprise Series.....	7
NiceLabel Print Center	7
NiceWatch Enterprise.....	7
Web Service Trigger	7
Web Service Action.....	8
HL7 Update (Healthcare Level 7)	8
Database Trigger	8
Copy/Paste Support in Action Editor.....	9
Update to NiceWatch Startup Error Handling	9
New Features for the Right Click Menu in Log Pane.....	10

What is New in General

Document Storage Server

The new version of Enterprise Print Manager (EPM) offers the new feature of the Document Storage Server. EPM already runs on MS SQL server. The EPM scheme in the database server was expanded to allow storage of label-related documents.

The document storage system offers the users the common repository, where they can store label-related documents. Groups of users working on the same labeling project can create their own file structure within the document storage, share the files, and collectively use the same data, and they are no longer required to put the files on a commonly shared location in the file system. There is nothing wrong with using a shared location in the file system; however, the EPM is a web-based application, and allows documents to be shared to a much broader public, allowing users to connect to the document storage server from anywhere in the world.

The Document Storage can be used to store label templates, images and form files.

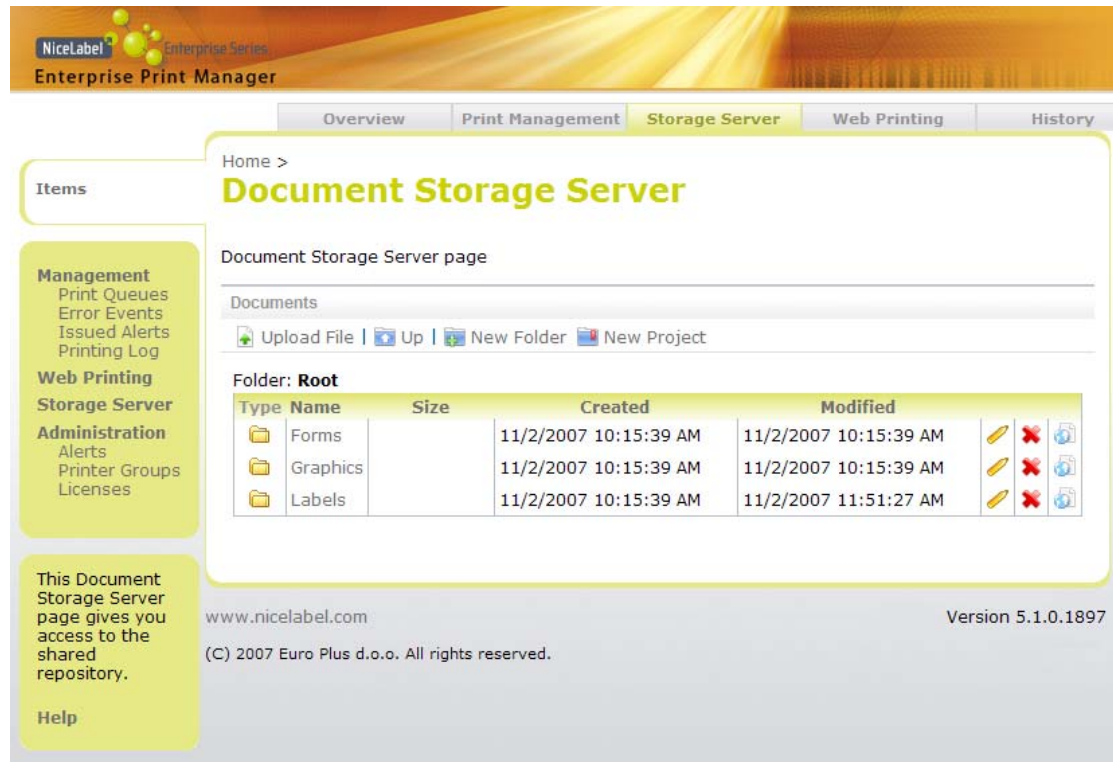


Figure 1: NiceLabel software on the workstations can get files from the Document Storage Server available in the Enterprise Print Manager

Web Printing is Available

The new version of Enterprise Series provides support for true web printing from the Enterprise Print Manager (EPM). When you provide label printing solutions to your users or clients, it is essential to know the competitive advantages of the web printing solution.

No longer is this a LAN-based solution, you can set up an internet label-printing server and offer your users a label printing solution, which is accessible from anywhere in the world. As the name suggests, the web-based label-printing solution runs inside the internet browser. All you have to do is open the EPM website with your Internet browser and use the application online.

The beauty of the web-based printing solution is that user does not need any NiceLabel software installed on his workstation. We do not even require any NiceDriver to be installed. Once the user selects a label and provides the data for its variables, the EPM will process the data and generate the print job optimized for the selected printer. If you select a Zebra printer, the EPM will generate a print file in ZPL; if you select a SATO printer, the EPM will generate a print file in the SATO programming language, etc.

Once generated, the print job is simply sent to the user's browser from where it is relayed to his local printer. The labels are produced in seconds after the processing completes in the EPM.

Printing can also be initiated to the server-connected printers. You can print your labels not only once inside your company, but also when you are on the road, or from anywhere outside of the company. Of course, you can also manage all server-printed labels; you can see the current status of the server printers and the status of the currently printed job.



Figure 2: Print labels on the web without NiceLabel software or even NiceDrivers installed on the local computer

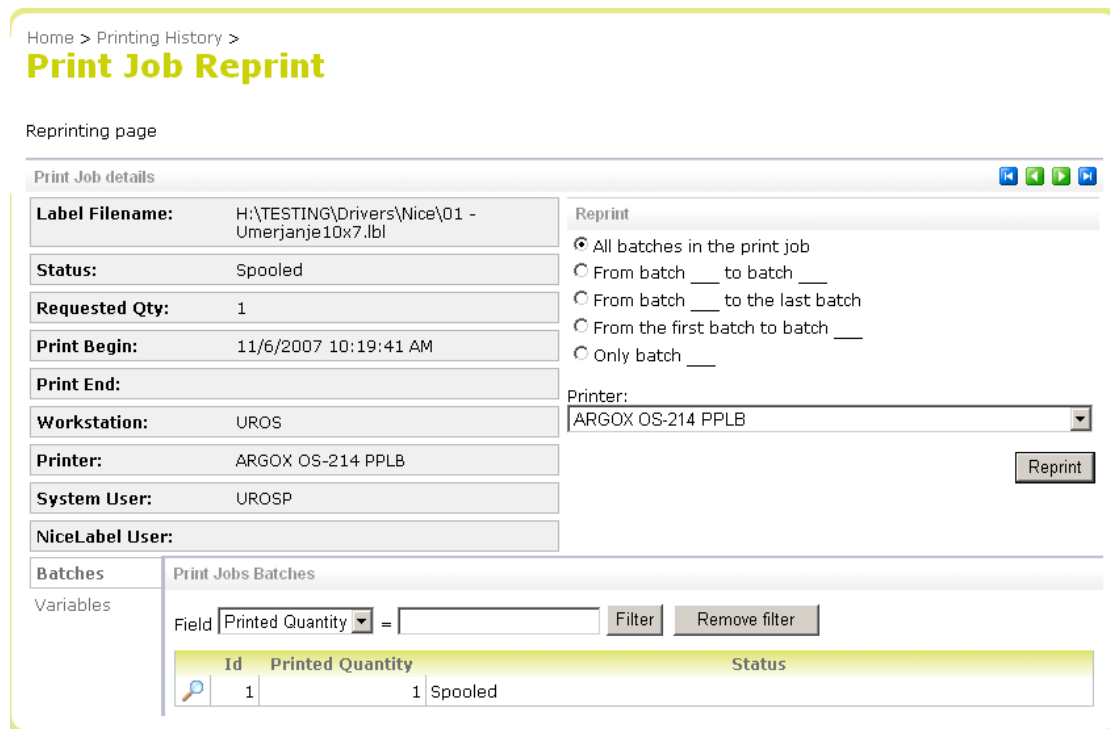
Reprinting Labels in the Enterprise Print Manager

Each NiceLabel workstation can store all the information about the printed job (e.g. label name, variable values, printer name, quantity of labels, etc.) Sometimes you need to run the same label job again and print identical labels. The reprint feature is already available on the workstations, and the new version of Enterprise Print Manager (EPM) allows you to execute the label reprint from a remote location.

Using the EPM, you can easily command any connected NiceLabel workstations to reprint a range or all of the previously printed labels. Similarly to NicePrintQueue, you can reprint labels on the original printer, or select another printer.

Reprinting labels, initiated from a remote location, provides great savings in time and better label printing efficiency. You never have to walk to the workstation to reprint labels, you can simply manage everything in the EPM from a remote location:

- You can see the status of printers connected to any NiceLabel workstation
- You can see the status of currently printed jobs
- You can reprint labels from the EPM



Home > Printing History > **Print Job Reprint**

Reprinting page

Print Job details

Label Filename:	H:\TESTING\Drivers\Nice\01 - Umerjanje 10x7.lbl	Reprint
Status:	Spooled	<input checked="" type="radio"/> All batches in the print job
Requested Qty:	1	<input type="radio"/> From batch ___ to batch ___
Print Begin:	11/6/2007 10:19:41 AM	<input type="radio"/> From batch ___ to the last batch
Print End:		<input type="radio"/> From the first batch to batch ___
Workstation:	UROS	<input type="radio"/> Only batch ___
Printer:	ARGOX OS-214 PPLB	Printer: ARGOX OS-214 PPLB
System User:	UROSP	<input type="button" value="Reprint"/>
NiceLabel User:		

Print Jobs Batches

Field **Printed Quantity** =

Id	Printed Quantity	Status
1	1	Spooled

Figure 3: Initiate label reprint on some workstation from a remote location with the EPM

Optimization in the Enterprise Print Manager

Improve User Experience with EPM

The loading time of pages within the Enterprise Print Manager has been decreased. Several optimization techniques and caching were implemented to speed up the work with the EPM.

Printer Grouping

You can define a group of printers and monitor the status of the whole group at one time. It makes sense to group the printers by their respective production areas, floors, or whichever parameter is important to you. Whenever some printer in a group fails, you will see the indication in the group's status as well.

Looking at a limited list of printers will increase the work efficiency with the EPM. The EPM will send queries for current status to a lower number of printers, and results will come back earlier.

Home >
Manage Print Queues

This page offers workstation and printer group management, including print queues.

Workstations | **Printer Groups**

Printer Groups

Go to groups configuration.

Group Name	Group Description	Group Status
Warehouse	Label printers in the warehouse	
Production Hall A2	Label printers in the production hall A2	
Production Hall C1	Label printers in the production hall C1	
Top priority printers	Label printers with highest importance. Must not fail.	

Figure 4: See the status of the printer groups, not the individual printers

New User Permissions

Because of the new possibilities provided by the Enterprise Print Manager, there are also new sets of permissions for the new features. In addition to the old permissions, you can define permissions for the following:

- Configure Printer Groups
- Document Storage Server Read Access
- Document Storage Server Write Access
- Web Printing Access

NiceLabel Enterprise Series

NiceLabel Print Center

The main advantages of the new version of the Print Center edition are listed in the chapter 'What is New in General'. Additionally, each NiceLabel Print Center comes with a brand new version of the NiceLabel client software (NiceLabel Suite).

For more information about new features and changes in the client software, see the document 'Release Notes for NiceLabel Software v5.1 – Standard Series'.

NiceWatch Enterprise

Web Service Trigger

A new Web service trigger is available to collect data from the clients.

The web service trigger is the Web Service provider that listens on the defined port for the incoming HTTP requests. Some 3rd party application or device can connect to the defined Web Service and send the data for label printing. You can use the data received by the web service in the filters and assign the data to variables.

The properties for the Web Service Trigger are also accessible from the Enterprise Print Manager for reviewing.

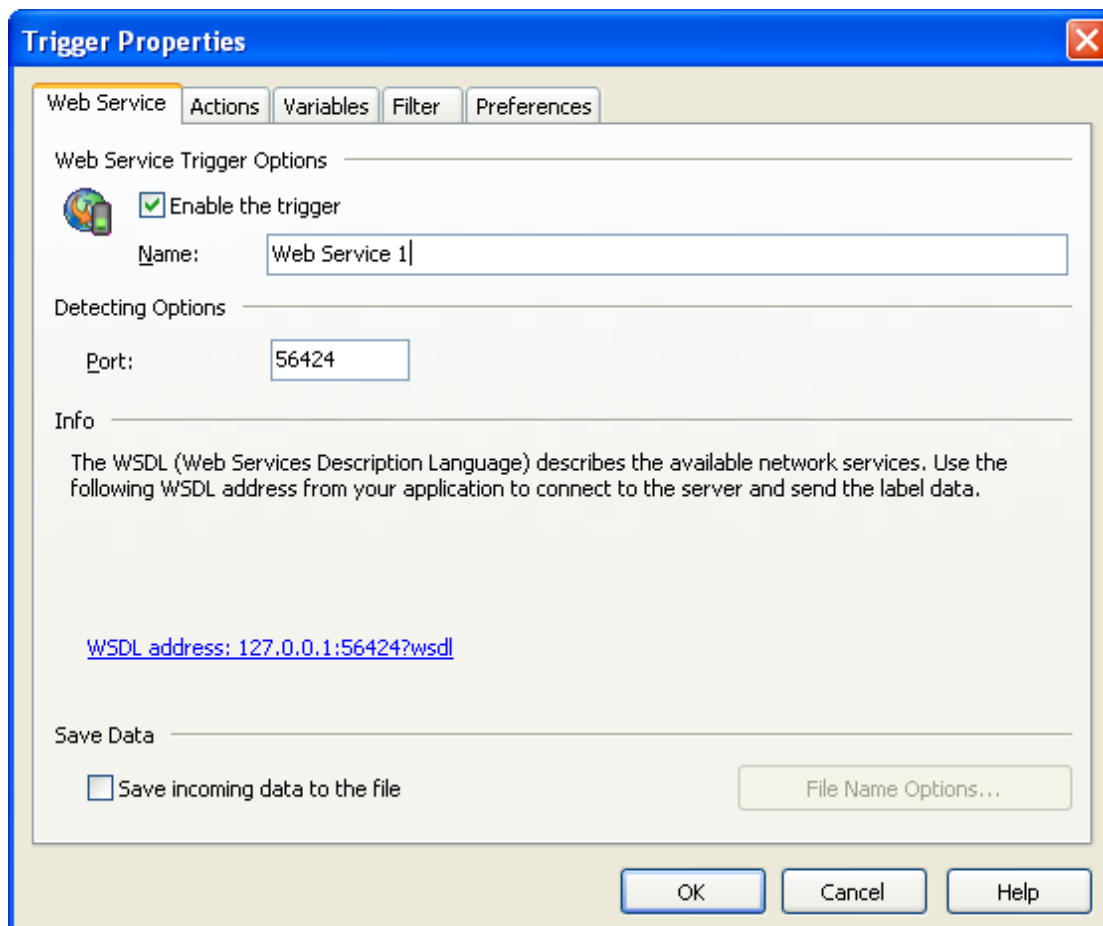


Figure 5: Definition of the Web Service trigger

Web Service Action

The new action allows you to select a Web Service method running on some other server, and receive the result of the call.

You can browse for the Web Service WSDL document. Based on the definition, you can configure which values will be used for parameters (fixed or variable), and what the return values (if any) present: a success or fail condition.

HL7 Update (Healthcare Level 7)

An update has been implemented in the HL7 support to better communicate with the HIS software at the other end. More options are accessible to the user when defining the communication protocol.

Database Trigger

This new feature allows you to trigger label printing based on the change of records in a monitored database. There is variety of choices, when exactly the labels should print with the data coming from the database.

You can select from:

- Print new records in a database (based on a unique incremental value)
- Print new records and delete them afterwards
- Print new records and update them afterwards (you can update some field to mark the record printed, or you can execute your own SQL sentence upon the database)

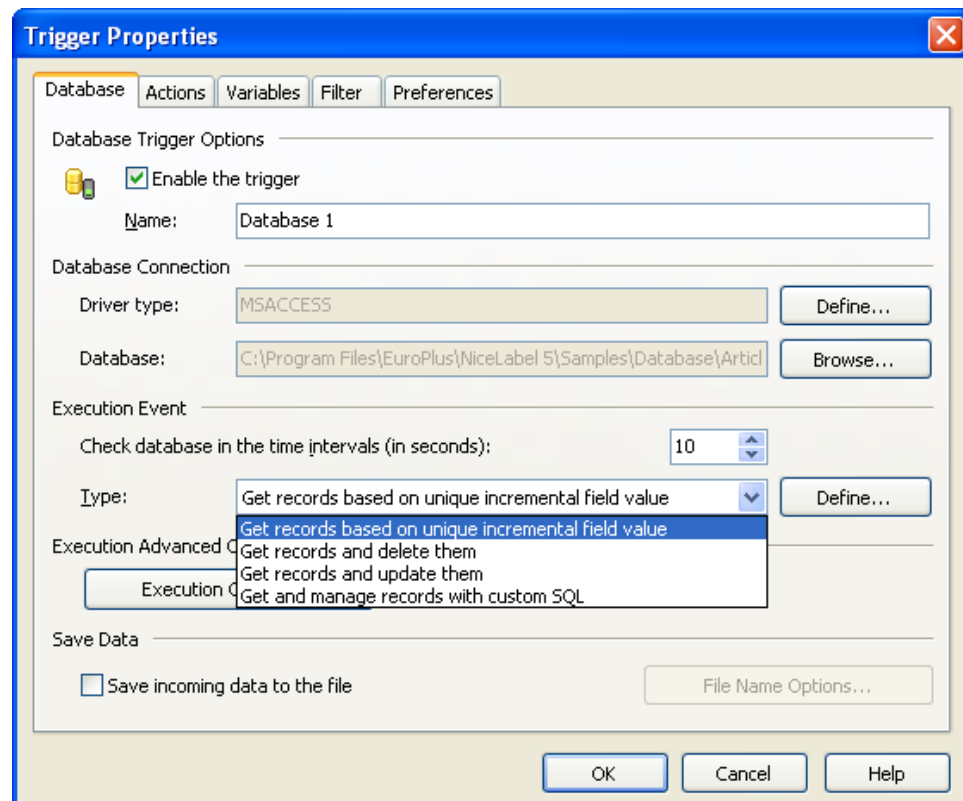


Figure 6: Automatically print labels based on the new records in the monitored database

Copy/Paste Support in Action Editor

If you need to use many repetitive actions in the trigger, you will benefit from the Copy/Paste feature in the action editor. Any action you have defined can be simply copied as an action to the same trigger, as an action to another trigger, or even to the action editor for triggers in NiceForm. Exchanging actions could not be any simpler.

Update to NiceWatch Startup Error Handling

When the communication between NiceWatch manager and the server was not possible, you did not receive all error messages that may have helped you to resolve the problem. The clues for successful resolution were not displayed.

The error handling and communication path between the manager and the server was greatly enhanced in the new version. The manager will display a list of errors and suggest the possible solution, or at least offer clues as to where to look for a workaround.

New Features for the Right Click Menu in Log Pane

When you right-click into the log pane, a list of available options is displayed in the context menu. The options offer useful shortcuts in case you wish to investigate any NiceWatch problems further or share with somebody else (some other NiceWatch expert, NiceLabel technical support, etc.)

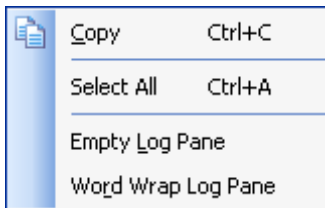


Figure 7: New options for the context menu in the Log Pane