



# Mobile Label Printing with Pocket NiceLabel

## White Paper

Bar code and RFID smart labeling software for Windows® CE Mobile Devices

Version 20070307-01

© 2007 Euro Plus d.o.o. & Niceware® International, LLC  
All rights reserved.

[www.nicelabel.com](http://www.nicelabel.com)



**Head Office**  
Euro Plus d.o.o.  
Ulica Lojzeta Hrovata 4c  
SI-4000 Kranj, Slovenia  
Tel.: +386 4 280 50 00  
Fax: +386 4 233 11 48

[www.europlus.si](http://www.europlus.si)  
[info@europlus.si](mailto:info@europlus.si)



Nice Software. Nice Partner. Nice Value.

**North American Office**  
Niceware International, LLC  
10437 Innovation Drive, Suite 147  
Milwaukee, WI 53226  
Tel.: +1 414 476 6423  
Fax: +1 414 476 7955

[www.nicewareintl.com](http://www.nicewareintl.com)  
[info@nicewareintl.com](mailto:info@nicewareintl.com)

# Table of Contents

- Executive Summary ..... 3**
- Mobile Label Printing Challenge..... 4**
- Mobile Label Printing Applications ..... 5**
  - Direct Printing Method..... 5
  - Distributed (Print Server) Printing Method ..... 6
  - Print Engine Printing Method ..... 8
- Label Design versus Label Printing ..... 8**
  - Designing a Label Template with NiceLabel Pro ..... 9
  - Designing a Form with NiceForm..... 10
- Transferring Files to a Mobile Device ..... 10**
  - Exporting a Label (.LBL) File with NiceLabel Pro ..... 10
  - Exporting Form (.XFF) Files with NiceForm ..... 11
- Mobile Label Printing Solution ..... 12**
  - NiceLabel Suite ..... 12
  - NiceLabel Print Center ..... 12
  - NiceLabel Pocket PC Designer..... 13
  - Comparison Table: NiceLabel Pocket PC Designer, Suite and Print Center ..... 13
  - Comparison Table: Pocket NiceLabel Printing Methods ..... 14
- System Specifications ..... 14**
  - Desktop Computer ..... 14
  - Mobile Device..... 15
  - NiceDrivers..... 15
- Conclusion..... 15**
- Appendix ..... 16**
  - Euro Plus d.o.o. and Niceware International, LLC..... 16
  - NiceLabel Product Overview..... 16

## Executive Summary

Mobile label printing has become an integral part of inventory management and order tracking in almost any kind of industry. With the rise of sophisticated inventory management systems and the requirement of customers to better track their orders, companies increasingly deploy mobile label printing applications to monitor their flow of goods. In addition, deploying mobile label printing applications provides opportunities to improve service, reduce costs, and make business processes such as product warehousing, shipping, identification, and tracking more efficient.

Pocket NiceLabel is a software package for Windows CE Mobile Devices that offers mobile label printing for more than 1300 thermal printers. Pocket NiceLabel is a module of the NiceLabel Suite edition, which is a powerful labeling software for desktop and enterprise-wide labeling applications.

The new version 5 of Pocket NiceLabel is a complete .NET rewrite and features many improvements from previous Pocket NiceLabel versions. Pocket NiceLabel version 5 supports Microsoft Compact Framework 2.0, has a smaller deployment footprint than in previous versions, consists of one Pocket NiceLabel application that can now print form files (no longer separate Pocket NiceForm application is installed), and comes with an enhanced synchronization utility that replaces the old Synchronization Manager.

Pocket NiceLabel does not require any programming skills to design labels for your Mobile Device. You can use Pocket NiceLabel to print labels in a mobile environment in the following three ways:

- Direct label printing to more than 1300 thermal printers.
- Distributed (print server) label printing to any printer on your network.
- Print engine label printing using Pocket NiceEngine to control label printing functions in a separate application on a Windows CE device.

To learn more about Pocket NiceLabel see also the Pocket NiceLabel Quick Start Guide and Pocket PC Programming Guide available for download from the NiceLabel Web site at **[www.nicelabel.com](http://www.nicelabel.com)**.

## Mobile Label Printing Challenge

Companies use mobile data collection and printing solutions to keep track of products and inventory. However, many times they struggle to find a label design and printing solution that combines ease-of-use and flexibility in a mobile printing environment. Companies want to streamline their label printing and look for solutions that enable both label printing from a desktop/ server computer and Windows CE Mobile Devices without going through the hassle of programming new applications for different application environments.

If you are looking for mobile label printing solutions, you might face the following questions:

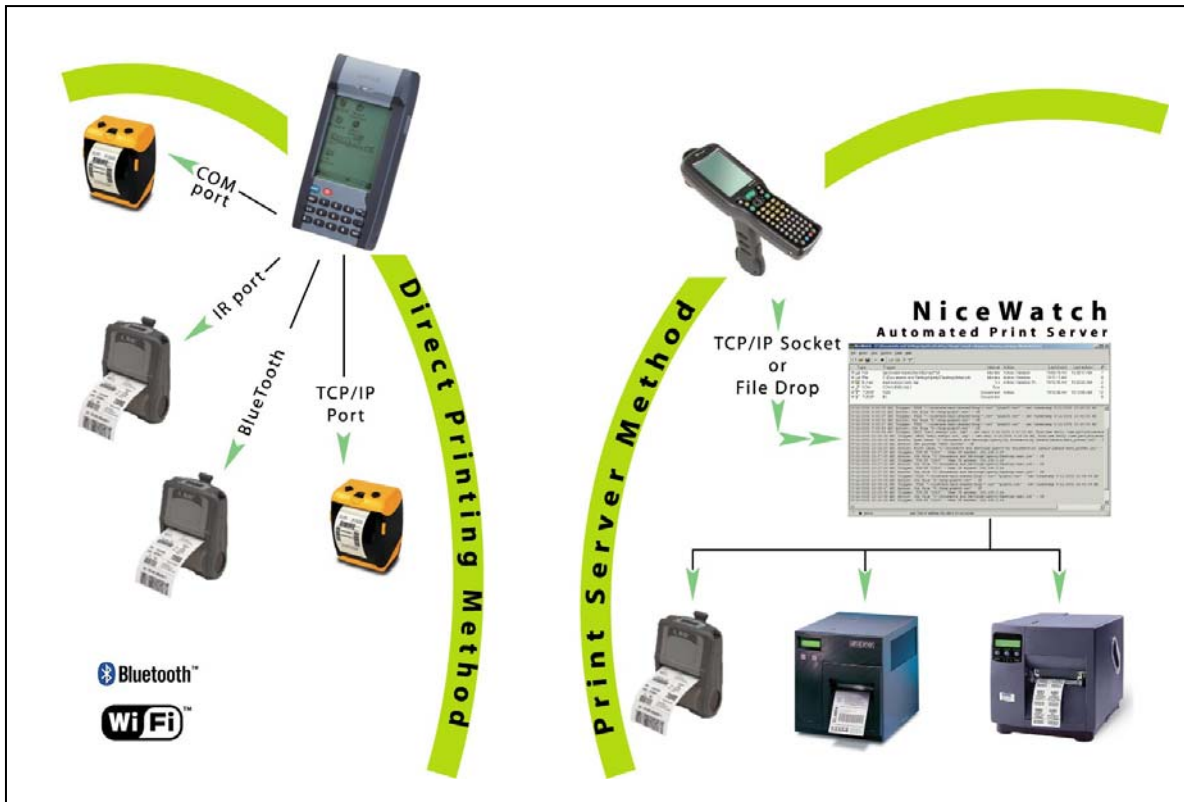
- Can I create one label that can print from both a desktop/ server computer and Windows CE device? Or, do I have to develop different labels for each environment?
- How easy is it to create labels for and print labels from a Windows CE Mobile Device? Do I need programming skills to do so?
- How complicated is it to collect and enter data into the label template and print the label with a Mobile Device? Operators in the field need an easy-to-use data entry interface with as least error potential as possible.

Label design and printing from a Windows desktop and server computer has become a relatively easy task to accomplish. However, Windows mobile operating systems are not the same as Windows desktop operating systems. There are no Windows printer drivers. Printing labels from Windows Mobile Devices is not as easy as printing labels from a desktop environment. Many applications on the market require programming skills to develop user interface and port communication for mobile label printing through COM, Bluetooth or TCP/IP ports. All this adds complexity, inflexibility and cost to your needs of mobile label printing. Label design and use should be easy and not require additional cost or sophisticated programming skills. In addition, you want to print the labels to different printers either directly or through your network without creating a separate label for each printer model you have.

If you are an application developer, you want to embed label printing in your application that can print to more than one specific printer type. However, you do not want to spend the additional time and money to learn the native printer language of all the different thermal printers that your application should support. You look for an easy bolt-in solution to enable your application to print to any printer.

## Mobile Label Printing Applications

Pocket NiceLabel offers three (3) types of label printing methods: direct, distributed (print server) and print engine printing method.



Mobile Printing Methods with Pocket NiceLabel

### Direct Printing Method

With the Direct Printing Method you print labels directly from the Mobile Device that is connected to the printer. On your Mobile Device, you must select the port that connects the printer with your Mobile Device. You have three (3) port options for the direct printing method:

- COM port
- TCP/IP port
- Bluetooth

Using the direct printing method requires you to select the printer type at the time of label design and imposes some label design limitations. See the section **Label Design versus Label Printing**.

The figures below show examples of open label (.PNL) and form (.PFF) files that you can print with Pocket NiceLabel.

**Exported label (.PNL) file to Mobile Device:**

Var. Name	Var. Value
▶ Edition	
Version	
ProductID	

Print Label File with Pocket NiceLabel

**Exported form (.PFF) file to Mobile Device:**

Print Form File with Pocket NiceLabel

Printing labels with Pocket NiceLabel, you can scan data into the variable fields (your Mobile Device must have a separate scanning software) and enter the data to the variable fields manually by tabbing the keyboard of your Mobile Device.

Printing form files with Pocket NiceLabel is even easier than printing label files with Pocket NiceLabel. You can link databases to the form (.PFF) file and use Combo Boxes (drop-down menus) to select the data you want to print. Printing form files with Pocket NiceLabel simplifies data input, reduces data entry errors and accelerates label printing.

## Distributed (Print Server) Printing Method

With the Distributed (Print Server) Printing Method you print labels from the Mobile Device to NiceWatch, which handles printing and enables selection of different printer drivers. Pocket NiceLabel becomes a client to NiceWatch, which is the automated label-printing server running on a PC or a server.

Pocket NiceLabel will output a print request that describes the label layout and the printing process, encode this information to a .JOB file using NiceCommands and send the .JOB file to a file trigger or a TCP/IP socket in NiceWatch. NiceWatch processes the .JOB file and prints the label to any available network printer.

Using the distributed (print server) printing method allows you to select the printer type and format at the time of printing versus at the time of label design. Because NiceLabel Pro is running on the print server at the same time as the labels are printed, there are no design limitations. You can use all the NiceLabel Pro functionalities, such as true type font for both fixed text objects and objects using variables.

If you want to use the distributed (print server) printing method, you can use either label files (.PNL) or form files (.PFF) with Pocket NiceLabel to select the data in the field you want to print from a printer on your network. However, using form files (.PFF) with Pocket NiceLabel is the recommended application because of its ease-of-use for the operator in the field.

To set up the distributed (print server) printing method, you need to do the following steps:

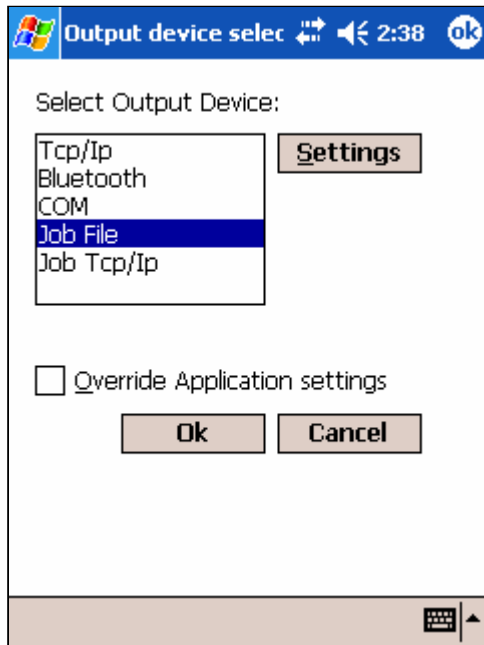
- Select the communication port of your Mobile Device and Print Server.
- Setup NiceWatch on your server or computer where the NiceLabel software is installed.
- Select the correct form (.PFF) file properties.

### Selecting Communication Port for Distributed (Print Server) Printing Method

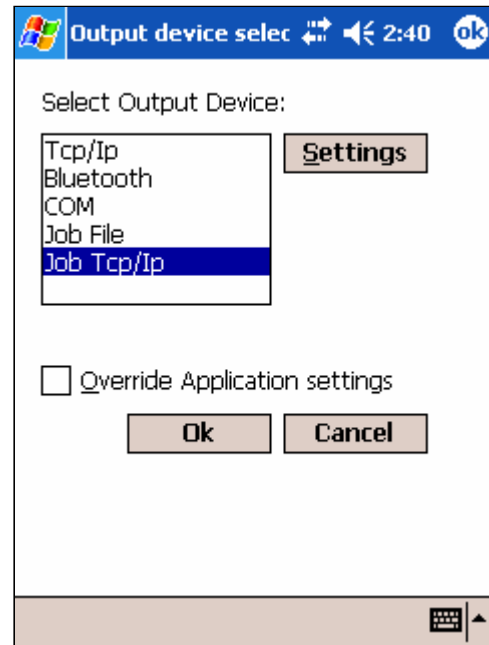
On your Mobile Device you have two (2) port options for the distributed (print server) printing method:

**JOB file:** A .JOB file specifies all the information required to print a label (label, data and printer). When you select the data with your Mobile Device and send the print job by tabbing the print button, NiceWatch detects the dropped file in a specified folder, processes the data and prints the label(s) from the NiceWatch printing server.

**JOB TCP/IP:** A TCP/IP trigger works similar to a JOB file trigger. The Mobile Device sends the job file to NiceWatch through TCP/IP. NiceWatch accepts the incoming file on a pre-defined TCP/IP port and processes the label printing on the NiceWatch printing server.



Distributed Printing: JOB File



Distributed Printing: JOB TCP/IP

### Setting up NiceWatch Print Server

NiceWatch is a module of the NiceLabel Suite edition that monitors events and automatically starts label production when specific (trigger) events occur. Trigger events can occur through a trigger file, an email, TCP/IP socket connection or COM port activity. NiceWatch can watch unlimited number of events each with their own specified action. NiceWatch executes a pre-defined activity, such as label printing through a network printer, if one or more of such trigger events occur. You can use NiceWatch and start automatic label production from your network or your computer where the NiceLabel software is installed. If you want to print labels on a remote print server using your Mobile Device, you can set up NiceWatch with JOB file or TCP/IP triggers.

For a detailed discussion about NiceWatch, please see the NiceWatch User Guide available for download on the NiceLabel Web site at [www.nicelabel.com](http://www.nicelabel.com).

## Selecting Form File Properties

If you use a form to initiate label printing through the NiceWatch print server, you must setup the form properties with NiceForm on your desktop computer. Make sure that the information entered in the window form properties are the same as the provided information when you set up the communication ports between the Mobile Device and NiceWatch print server.

For a detailed discussion about selecting form file properties, please see the Pocket NiceLabel Quick Start Guide available for download on the NiceLabel Web site at [www.nicelabel.com](http://www.nicelabel.com).

## Print Engine Printing Method

The Pocket NiceEngine (PNE), short Print Engine, is a .NET Assembly that allows other applications on the Mobile Device to control label printing functions. Pocket NiceLabel offers a .DLL file that can be embedded into your application. You do not need to learn the native printer language (unique printer code) of the thermal printer you want to use for your application. You do not need to write an embedded printer code or communicate with the operating system's I/O. The Windows Mobile Device can print labels using Pocket NiceLabel as the print engine that will process opening of .LVR, .PNL and .PFF files and printing of labels to printers on TCP/IP, Bluetooth and COM (serial) ports. Pocket NiceEngine, which is embedded in Pocket NiceLabel, functions as an integrated print engine for any data collection application on your Mobile Device. Pocket NiceLabel's .NET Assembly enables you to learn and deploy one interface for your mobile label printing application, giving your application the flexibility to print to more than 1300 thermal printers.

The Pocket NiceEngine (PNE) with Pocket NiceLabel also supports the distributed (print server) printing method. The print engine creates a .JOB file with specific label printing commands (NiceCommands) that is saved on the computer or server where NiceWatch is running. The NiceWatch print server executes the NiceCommands from the .JOB file and enables label printing to any printer on your network.

For more information about Pocket NiceEngine and .NET programming, see the Pocket NiceLabel Programming Guide available for download from the NiceLabel Web site at [www.nicelabel.com](http://www.nicelabel.com).

## Label Design versus Label Printing

The primary purpose of Pocket NiceLabel is reliable and fast mobile label printing. However, industrial label printing is in fact a two step process: First, you design a label and set up the print server configuration (if necessary). Second, you select data and print the label during production or in the warehouse. Before you start designing a label for your Mobile Device you must consider the following:

1. Printing method: Do you want to print the label to a thermal printer directly with the Mobile Device connected through a COM, Bluetooth or TCP/ IP port (direct printing method)? Or do you want to print the label through the NiceWatch print server (distributed printing method)?
2. Printing application: Do you want to print labels with Pocket NiceLabel using label (.PNL) files or form (.PFF) files. Pocket NiceForm is part of Pocket NiceLabel and is a user friendly data entry application to print labels.
3. Designing a label or data entry application form on your desktop computer: You design label files with NiceLabel Pro and form files with NiceForm on your desktop computer. If you use the direct printing method and design label files with NiceLabel Pro, you have to consider certain requirements in order to print the labels in the field. Those requirements do not apply if you use the distributed printing method with NiceWatch as the print server.

## Designing a Label Template with NiceLabel Pro

You design a label with NiceLabel Pro on your desktop computer. For example, the following label uses text objects with fixed text and keyboard input variables, bar code object with keyboard input variable, text object with new date field and fixed picture object. You can export this file to your Mobile Device and print labels in the field.



NiceLabel Template Designed with NiceLabel Pro

If you want to print the label with your Mobile Device directly (**direct printing method**) using Pocket NiceLabel, consider the following label design requirements:

- Link only text and bar code objects to variables.
- Use only native (printer resident) fonts for all the variables on the label. Exporting to Pocket NiceLabel does not support variables in true type font unless you use NiceMemMaster to download true type fonts and graphics to your printer's internal memory to enhance printing performance for thermal printers. See Online Help of the NiceMemMaster module for more information.
- Use only printer internal counters on the label. Exporting to Pocket NiceLabel does not support NiceLabel variable counters.
- Select the printer you will print the labels with in the field at the time you design the label. The generated .PNL file only works with the selected printer because native language compliance is required at the time of label design.

Pocket NiceLabel supports the following functions:

- Concatenation
- Date Addition
- Internal Printer Counters
- Internal Printer Clock (Date/ Time)
- EAN.UCC 128
- Linear
- Subset

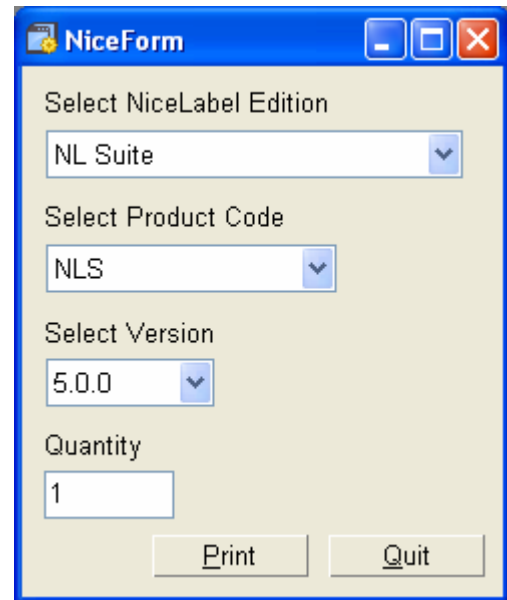
### Designing a Form with NiceForm

You can also create a form (.XFF) file from the label above, export the form to your Mobile Device and print the converted .PFF form file using Pocket NiceLabel.

For example, NiceForm offers you to connect your form to a database and to use drop down menus (combo boxes) to make data entry as easy as possible.

Pocket NiceLabel supports the following features and functions with form files:

- Text, Button, Edit Field, Memo Field
- Combo Box and List Box
- Table, Database Navigator and Database Search



NiceForm File Running Desktop Computer

## Transferring Files to a Mobile Device

When you have designed your label or form, you need to synchronize the label/ form files with your Mobile Device. To transfer files from your desktop computer to your Mobile Device, you must have Microsoft ActiveSync installed on your computer. ActiveSync allows for USB, serial, IR and TCP/IP wireless synchronization on a scheduled interval. You must understand how synchronizing files between your desktop computer and your Mobile Device works. See the documentation of your Mobile Device for further references.

### Exporting a Label (.LBL) File with NiceLabel Pro

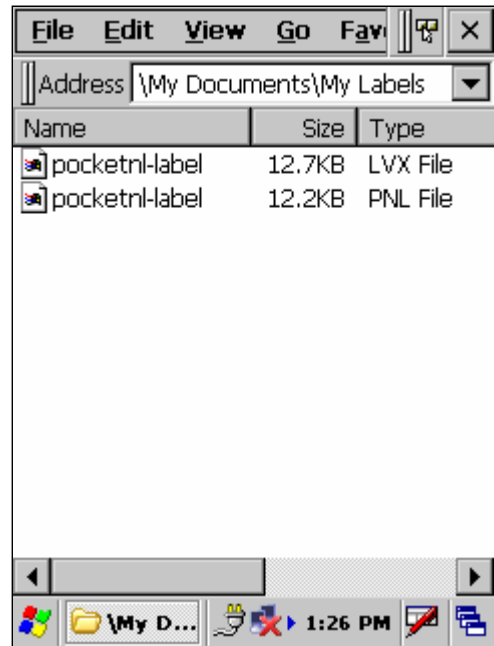
You export a label (.LBL) file with NiceLabel Pro using the **Export to Pocket PC** command under the **File/ Export** menu. The export function checks if the settings and formatting of the label (.LBL) file is compatible with Pocket NiceLabel. If not, an error message will appear explaining why exporting the file is not possible. You have to change your file accordingly and export it again. The export command saves the label in a format that Pocket NiceLabel can read on your Windows CE Mobile Device.

Two files will be created when you export your label (.LBL) file:

- .LVX file containing information about the variable fields on the label.
- .PNL file containing the exported label layout with all the objects in the printer specific code.

Both files will be saved to the same folder where the original label file is stored. You have to manually transfer the .LVX and .PNL files to the synchronization folder of your Mobile Device. ActiveSynch will transfer the files once your Mobile Device is connected to your desktop computer.

For more detailed information about label export to your Mobile Device, please see the Pocket NiceLabel Quick Start Guide available for download on the NiceLabel Web site at [www.nicelabel.com](http://www.nicelabel.com).



Exported Pocket NiceLabel Files

## Exporting Form (.XFF) Files with NiceForm

After you have designed your label and form files on the desktop computer you have to transfer your form (.XFF) files from your desktop computer to your Mobile Device. NiceForm offers a synchronization wizard that uses the ActiveSync technology for your label and form transfers to the Mobile Device.

The export function checks if the settings and formatting of the label (.LBL) and form (.XFF) files on your desktop computer are compatible with Pocket NiceLabel. The export command saves the label in a format that Pocket NiceLabel can read on your Windows CE Mobile Device.

If you link the form with a database, the exported database files will be stored in an .SDF file format on the Mobile Device. The actual database will not be transferred to the Mobile Device. If you want to change the database, you have to do the changes on your desktop computer and synchronize the form (.XFF) file from the desktop to your Mobile Device again.

## Mobile Label Printing Solution

Pocket NiceLabel is a software package for Windows CE and Pocket PC terminals that enables you to print bar code labels in a mobile environment directly to a thermal printer or through any printer on your network. Pocket NiceLabel is part of three NiceLabel products that are dedicated to simple mobile label printing: NiceLabel Suite, NiceLabel Print Center and NiceLabel Pocket PC Designer.

### NiceLabel Suite

NiceLabel Suite is the premier label printing solution for both desktop and mobile label printing. NiceLabel Suite enables you to create mobile printing applications that print directly from the Mobile Device to the printer or through a server when used with the NiceWatch print server. The NiceLabel Suite software offers the following modules (among others) that you can use to create your mobile label printing solution:

- **NiceLabel Pro:** Full-featured label design and printing software that you use to create and print label (.LBL) files with your desktop computer.
- **NiceForm:** A front-end labeling application generator for desktop and mobile label printing environments. NiceForm provides operators a simple and pre-defined label printing interface that simplifies data input and reduces errors in data processing and label printing. Pocket NiceForm is the front-end label application for mobile label printing and included in Pocket NiceLabel.
- **NiceWatch:** A centralized print server to automate label printing operations. NiceWatch accepts a print request from any mobile, desktop, ERP or WMS application to automate label printing without user intervention.
- **NiceMemMaster:** Utility to download true type fonts and graphics to a printer's internal memory to enhance printing performance for thermal printers.
- **NiceData:** A powerful database manager to create and edit database tables and import data from text files to database tables.
- **NicePrintQueue:** A print job management module that provides overview of print jobs, data used on the label and quantity of printed labels. All data is stored for easy re-prints of past print jobs.
- **Pocket NiceLabel:** A mobile client that executes the label and form designs that were created on a desktop PC.

The NiceLabel software family offers non-programmers the ability to develop a solution for any mobile printing environment. Using NiceLabel Pro or NiceForm, you have an interface similar to Windows Office that makes label and form design easy for your mobile printing application.

### NiceLabel Print Center

The NiceLabel Print Center is the enterprise solution for client-based label printing and centralized system management. The NiceLabel Print Center enables users to initiate label design and printing on different local clients and to manage them from a centralized location. NiceLabel Print Center includes all features of NiceLabel Suite plus the following:

**Enterprise Print Manager:** A web-based module installed on the Web server that you can access from any workstation on your network or through the Internet to manage your printing process on your network clients.

## NiceLabel Pocket PC Designer

NiceLabel Pocket PC Designer enables you to create mobile printing applications that print directly from the Mobile Device to the printer through Wi-Fi (TCP/IP), Bluetooth, COM (serial) or IR communication. The NiceLabel Pocket PC Designer is a mobile label printing application only. You cannot use the NiceLabel Pocket PC Designer for desktop label printing. NiceLabel Pocket PC Designer includes the following:

- **NiceLabel Pro:** Full-featured label design and printing software that you use to create and print label (.LBL) files with your desktop computer. See **Note:** on the previous page.

**Note:** Pocket PC Designer is designed for printing from Windows CE Mobile Device (and not from the desktop computer). The NiceLabel Pro product included in the Pocket PC Designer package has some demo limitations when you print labels on the desktop computer. You can design labels on the desktop computer and export them to the Windows CE Mobile Device; but you can only print five (5) labels per print job for testing purposes on the desktop computer. If you need a fully functional NiceLabel product, purchase NiceLabel Suite that includes one Client Access License (CAL) for one Windows CE Mobile Device.

- **NiceForm:** A **limited** version of the standard NiceForm that allows rapid user interface design for a Mobile Device only. Interface design for a desktop PC is not enabled.

**Note:** You create form files on the desktop computer and export them to the Windows CE Mobile Device; however printing form files a desktop computer is limited according to the Demo restrictions (you can print up to five labels per print job for testing purposes).

- **Pocket NiceLabel:** A mobile client that executes the label and form designs that were created on a desktop computer.

## Comparison Table: NiceLabel Pocket PC Designer, NiceLabel Suite and NiceLabel Print Center

NiceLabel Pocket PC Designer, NiceLabel Suite and NiceLabel Print Center support the following mobile printing tools and functions:

	Pocket PC Designer	NiceLabel Suite	NiceLabel Print Center
NiceLabel Pro: Label (.LBL) design on desktop computer	x	x	x
NiceForm: Form (.XFF) design on desktop computer	x	x	x
NiceWatch: Print server		x	x
NiceMemMaster: True type fonts utility to enhance printer performance		x	x
NicePrintQueue: Print job data storage for easy re-prints.		x	x
Pocket NiceLabel: Mobile label and form file printing	x	x	x
Label printing from desktop computer		x	x
Distributed (print server) printing with NiceWatch from Mobile Device		x	x

Direct label printing from Mobile Device	x	x	x
.NET Assembly Integration	x	x	x
System Management: Basic-Single Computer (users, print, queues, log)			x
System Management: Centralized and Alerting			x
System Management: Web-based and remote access			x

### Comparison Table: Pocket NiceLabel Printing Methods

Pocket NiceLabel offers three (3) types of label printing methods: direct, distributed (print server) and print engine printing method.

	Direct Printing	Distributed Printing	Print Engine Printing
Label design limitations	x		x
Pocket NiceLabel: Mobile label printing	x	x	
Pocket NiceLabel: Mobile form printing	x	x	
Thermal printer support	x	x	x
Laser printer support		x	
NiceWatch (print server) required		x	
Custom programming required			x

## System Specifications

If you use Pocket NiceLabel for a mobile label printing application, you will design the label template for your Mobile Device on a desktop computer and export the labels and data stored in a database to your Mobile Device. Pocket NiceLabel is a print only application and you cannot design labels with your Mobile Device. You must perform any label design or database changes on your desktop computer and export the modified files to your Mobile Device again.

### Desktop Computer

- Pentium II computer with 256 MB of free RAM.
- One of the 32-bit Windows operating systems: Microsoft Windows 2000, XP, 2003 or Vista. NiceLabel also supports 64-bit Windows operating system.
- Hard disk with 50 to 250 MB of free disk space (depending on installation options).
- CD-ROM drive.
- Support for OLE DB database drivers. Recent Windows operating systems have included OLE DB database drivers. If your operation system does not have the database support, the installation wizard will prompt you to install it.
- Administrator rights to the local computer during installation.

## Mobile Device

Pocket NiceLabel is the mobile client for the NiceLabel mobile printing products and for many different Windows mobile operating systems and hardware processors. Pocket NiceLabel is a single device license and each mobile device that is using Pocket NiceLabel requires a Client Access License (CAL). Client Access Licenses are available for 5, 10, 20 and 50 devices as well as a 1-year site license.

Operating Systems:	Windows Mobile 2003 and 5.0, Windows CE.NET 4.0 and above. All devices with Microsoft .NET Compact Framework 2.0.
Processors:	MIPS, SH3, SH4, StrongARM, XScale, X86.
Programmer Interface:	.NET Compact Framework. 2.0 Pocket Engine .NET Assembly Interface.
File Synchronization:	ActiveSync Version 3.5. or higher.

## NiceDrivers

NiceDrivers support more than 1300 thermal transfer printers and enable the NiceLabel software to use a direct communication mode to gain complete control over all printer settings and guarantee high-speed printing. You can download and install NiceDrivers for your thermal transfer printer for free from the NiceLabel Web site at [www.nicelabel.com](http://www.nicelabel.com).

NiceDrivers are required for the Direct Printing Method and not required, but recommended, for the Distributed (Print Server) Printing Method.

## Conclusion

Pocket NiceLabel provides simple label printing solutions on Pocket PC Windows CE and Windows CE.NET Mobile Devices. Pocket NiceLabel does not require any programming skills to design labels for your Mobile Device and offers the flexibility to print labels directly to more than 1300 thermal printers or to any printer on your network using the NiceWatch print server.

The Pocket NiceLabel engine enables software developers to add label printing to any Windows based mobile application without writing a single line of embedded printer code. Pocket NiceLabel's .NET Assembly gives any application the flexibility to print to more than 1300 thermal printers.

To learn more about Pocket NiceLabel, please contact one of our offices below.

### **Euro Plus d.o.o.**

Ulica Lojzeta Hrovata 4c  
SI-4000 Kranj, Slovenia  
+386 4 280 50 00 Tel  
+386 4 233 11 48 Fax

[www.europlus.si](http://www.europlus.si)  
[info@europlus.si](mailto:info@europlus.si)

### **Niceware International, LLC**

10437 Innovation Drive, Suite 147  
Milwaukee, WI 53226  
+1 414 476 6423 Tel  
+1 414 476 7955 Fax

[www.nicewareintl.com](http://www.nicewareintl.com)  
[info@nicewareintl.com](mailto:info@nicewareintl.com)  
[sales@nicewareintl.com](mailto:sales@nicewareintl.com)  
[support@nicewareintl.com](mailto:support@nicewareintl.com)

### **NiceLabel Products**

[www.nicelabel.com](http://www.nicelabel.com)

## Appendix

### Euro Plus d.o.o. and Niceware International, LLC

Euro Plus d.o.o. and Niceware International, LLC develop, supply and support software for automatic identification and data collection (AIDC) solutions on the desktop PC, the corporate server or the mobile enterprise environment. Our flagship product NiceLabel has become one of the world's major label design and printing software combining easy-to-use interfaces with the integration of advanced thermal transfer technology, ERP systems solutions, RFID technology and data collection tools. NiceLabel cooperates with printer manufacturers, partners and customers from all over the world.

Microsoft has certified all NiceLabel products with the "Designed for Windows XP and 2000", "Designed for Windows 2003" and "Designed for Windows Vista" logos, indicating reliability and operational compliance in the latest Windows environments. As a Microsoft Certified Partner, Niceware and Euro Plus present an excellent business opportunity for all those searching for a reliable, high-tech and advanced partner in the automatic identification and data collection industry.

### NiceLabel Product Overview

NiceLabel is the most advanced professional labeling software for desktop and enterprise users. NiceLabel offers an easy-to-use interface and meets any label design and printing requirement for efficient label printing solutions to users in retail, logistics, healthcare, chemical, automotive and other industries. NiceLabel offers three main product series.

#### NiceLabel Standard Series

The Standard Series is a line of NiceLabel core products for basic and advanced bar code and RFID smart label design, print and integration. Products are easy to use but offer powerful functions expected from advanced label designers. The Standard Series includes NiceLabel Suite, NiceLabel Pro, NiceLabel Express and Pocket NiceLabel.

**NiceLabel Suite:** The full-featured, modular labeling solution for label design and professional printing requirements. Multiple connectivity options allow users to perform stand-alone printing or integrate label printing into any network environment. NiceForm is a module in NiceLabel Suite that allows creating data entry and printing applications to make label production simple and error free. NiceLabel Suite includes NiceLabel Pro, NiceWatch, NiceForm, NicePrint, NicePrintQueue and Pocket NiceLabel for Windows CE support to create mobile printing applications.

**NiceLabel Pro:** Full-featured software designed for professional label design and printing, including complete database support and integration options. A wide range of features and options make NiceLabel Pro a perfect and easy-to-use tool for any labeling requirement. NiceLabel Pro includes NiceData and NiceMemMaster.

**NiceLabel Express:** Wizard-based software that fulfills basic bar code labeling needs. This entry-level software includes many design elements from the Pro edition with the emphasis on simplified user interaction.

**Pocket NiceLabel:** The label printing software for Windows CE mobile devices. Pocket NiceLabel enables Windows CE compatible computers and terminals to print bar code labels on any type of thermal printer that is supported by NiceLabel printer drivers.

## **NiceLabel Enterprise Series**

The Enterprise Series is a line of NiceLabel products designed for centralized printing systems management, monitoring and integrated high-volume printing. The Enterprise Series includes NiceLabel Print Center and NiceWatch Enterprise.

**NiceLabel Print Center:** The enterprise solution for client-based label printing and centralized systems management. NiceLabel Print Center product includes two modules. The NiceLabel Enterprise Print Manager module manages the printing process centrally while label design and printing occurs locally on the client computers hosting NiceLabel Suite module.

**NiceWatch Enterprise:** The enterprise solution for centralized integration of multi-threaded and high-volume label printing. NiceWatch Enterprise integrates the label printing process into enterprise-level products, such as Enterprise Resource Planning (ERP) systems, Warehouse Management Systems (WMS), Hospital Information Systems (HIS), and others.

## **NiceLabel Developer Series**

The Developer Series is a line of NiceLabel products designed for software developers looking for a way to integrate label printing functionality into their own applications. Currently, the Developer Series includes the NiceLabel SDK product.

**NiceLabel SDK:** Provides an opportunity to software publishers to reduce their label printing development costs and add additional value to their products.